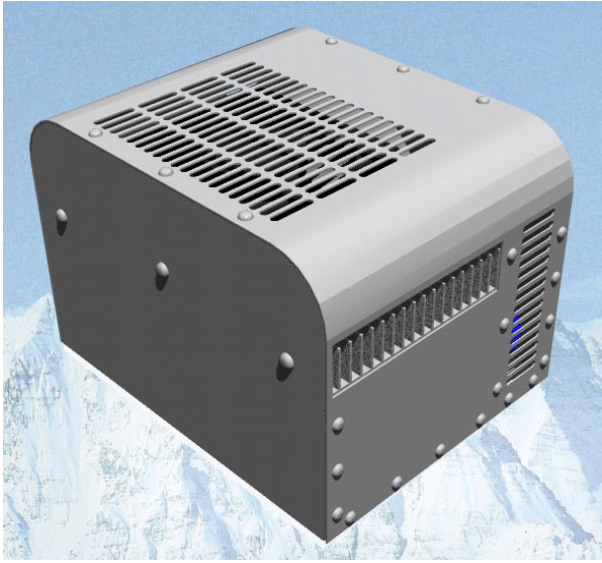
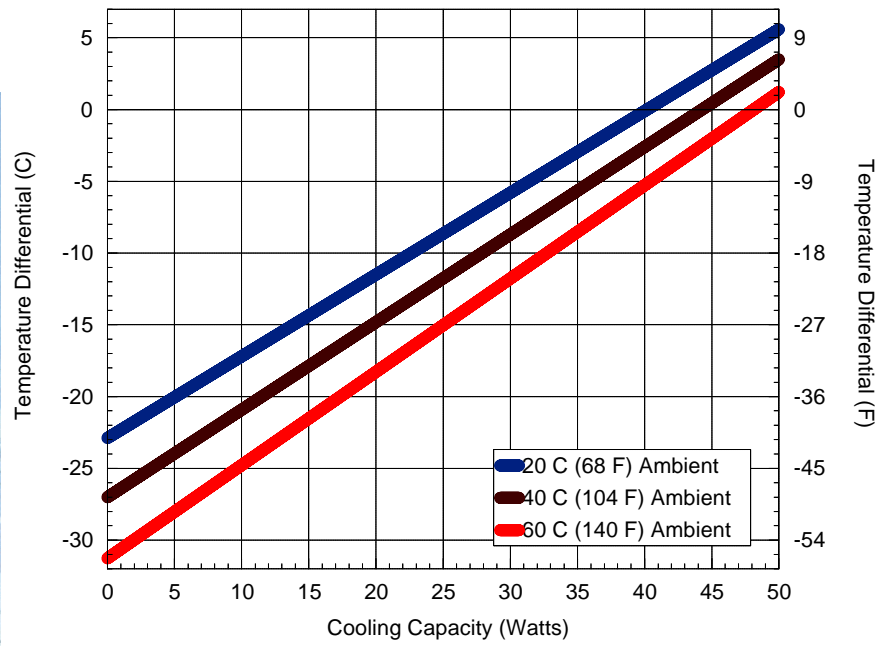


# FHP-450XE

135-165 Btu/Hr  
Nema-4 (Flush Mount)



## Performance:



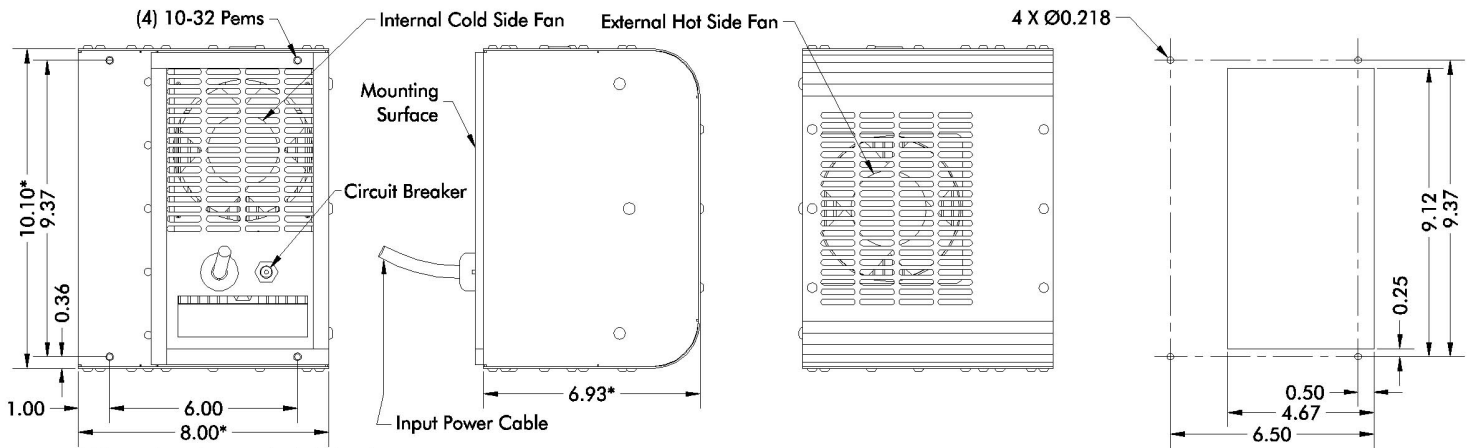
## Specifications

Ambient	20EC	40EC	60EC
Enclosure Air	$y = .57x - 22.9$	$y = .61x - 27.0$	$y = .65x - 31.3$
Cold Sink	$y = .48x - 22.9$	$y = .51x - 27.0$	$y = .55x - 31.3$

$y = ^aT(EC)$      $x = \text{Capacity (Watts)}$

Model	Part Number	Notes	Performance Rating (BTU/hr)	Voltage (VAC 50/60 HZ)	Current (Amps)	Weight Lbs.	Temperature Control	Condensate Removal	Operating Range (EC)
FHP-450XE	7-7070-4-000	Cool only, built in temperature control	135-165	120	2.3	19.8(9)	T'stat 85 F	Optional	-10/+70
FHP-452XE	7-7072-4-000	Cool only, for remote temperature control	135-165	240	1.1	19.8(9)	T'stat 85 F	Optional	-10/+70

## Mounting Cutout Dimensions



\* Dimensions does not include hardware.  
Dimension: inches



Call us toll free at 888-TECA-USA (832-2872)

ThermoElectric Cooling America Corporation • 4048 W. Schubert Ave. • Chicago IL (USA) 60639  
Phone: 773-342-4900 Fax: 773-342-0191 • www.thermoelectric.com • teca@thermoelectric.com