

EZ-ZONE® CONFIGURATOR SOFTWARE

EZ-ZONE® Configurator Software Provides Easier Set-up for EZ-ZONE Products

The EZ-ZONE® Configurator software from Watlow® allows you to configure Watlow's EZ-ZONE products in one simple process. It provides an easy-to-use interface that is more flexible and easier to read than the basic remote user interface (RUI). It works without requiring the purchase of any communications options because it uses the standard bus communications protocol that is included with all EZ-ZONE products.

The EZ-ZONE Configurator software is available as a free download at www.watlow.com.

Features and Benefits

Communicates with EZ-ZONE products via standard bus protocol

- Works regardless of which communications option is purchased or even when no communications option is purchased

Detects EZ-ZONE devices and reads up configuration

- Allows easy access to any setting

Presents pages and menus as they are in the controller's display, RUI and manuals

- Enables the user to easily locate what they are looking for

Wizard-style editor with menu explorer

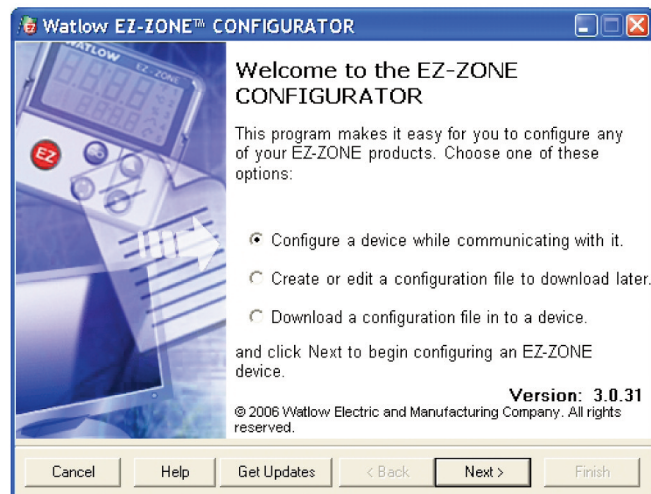
- Allows for easy examination of each menu
- Enables the user to skip directly to the parameters they want to work with

On-screen parameter help

- Reduces configuration errors
- Helps the user take full advantage of available features

Copy parameter settings

- Decreases the time to configure especially for multi-loop controllers



Features and Benefits (cont.)

Save configuration files on the computer with all the information required to set up a controller

- Preserves the settings for archiving, recovery or to simplify setting up another EZ-ZONE product
- Enables files to be e-mailed or made available to users on a network or via the internet to aid them with set up

View or modify configuration files saved during on-line editing sessions

- Allows users to get a jump on setting up EZ-ZONE products
- Aids in supporting remote users

Downloads saved configuration files

- Simplifies configuration of EZ-ZONE products

Flexible and smart compatibility checking

- Ensures configuration files are only loaded into devices that are similar enough to the original that the settings make sense



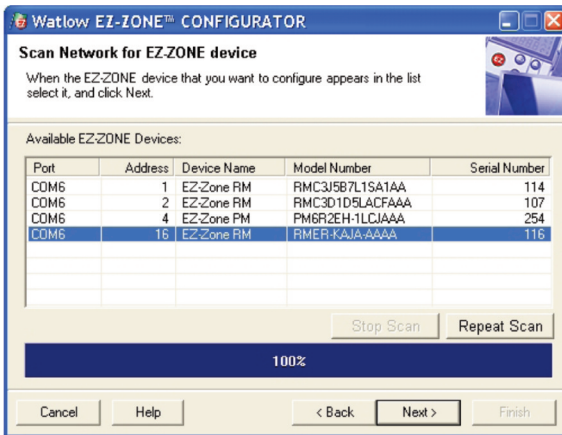
ISO 9001



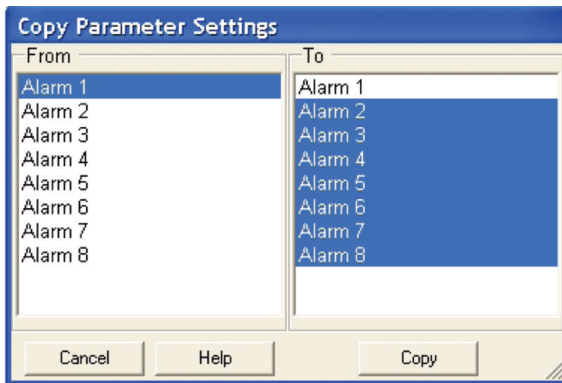
Registered Company
Winona, Minnesota USA

WIN-EZC-1009

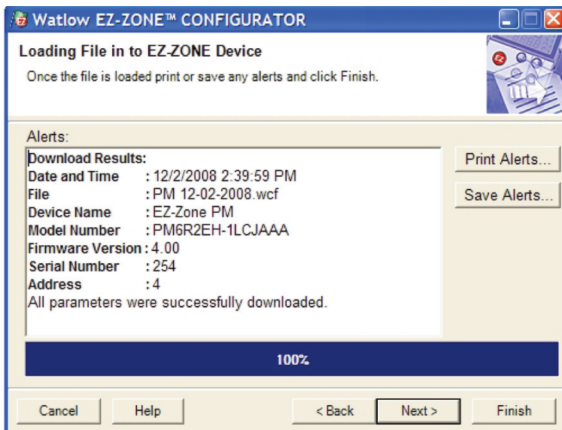
Illustrated Features



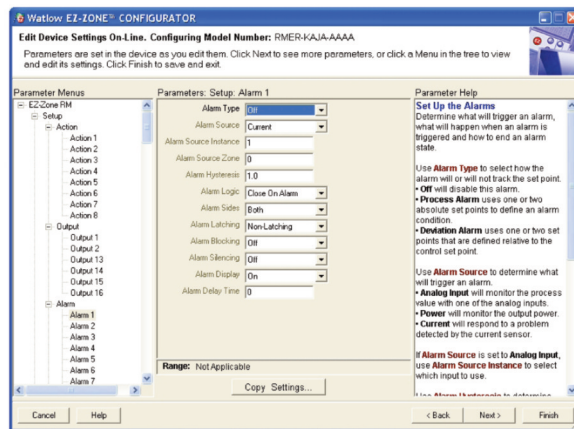
Detects EZ-ZONE devices connected to the computer's communications ports.



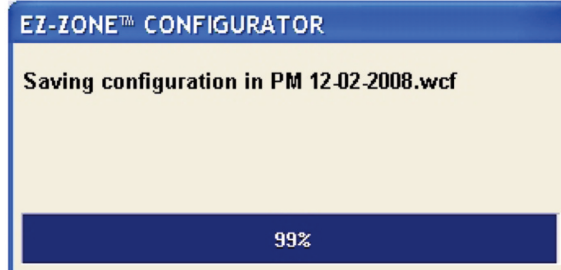
Copy feature speeds up configuration.



Confirms that parameter downloads were successful and reports exceptions.



Menu explorer allows users to skip directly to desired parameter or browse each setting.



Saves complete sets of parameter settings for backup, archiving or configuring other devices with the same settings.

Compatibility

EZ-ZONE Configurator software can be used to configure EZ-ZONE products when run on a computer connected to the EZ-ZONE product's standard bus port (EIA 485 also known as RS-485). For most computers a 485 converter is required.

System Requirements

Minimum Requirements

- 485 Communications Port: USB port and USB-to-485 converter, or serial COM port (232) and 232-to-485 converter
- Microprocessor: Pentium® IV or equivalent
- Memory: 128 MB RAM (256 MB recommended)
- Disk Space: 140 MB (100 MB if Microsoft.NET Framework is already installed.)
- Video: 800 x 600 (1024 x 768 or higher recommended)

Operating System Recommended

- Windows® XP Professional with Service Pack 1 or Service Pack 2

Also Supported

- Windows® 2000 with Service Pack 3

To be automatically connected to the nearest North American Technical Sales Office:

1-800-WATLOW2 • www.watlow.com • info@watlow.com

International Technical Sales Offices: Australia, +61-3-9335-6449 • China, +86-21-3381-0188 • France, +33 1 4132 7970
 Germany, +49 (0) 7253-9400-0 • Italy, +39 (0) 2 458-8841 • Japan, +81-3-3518-6630 • Korea, +82-2-2628-5770
 Malaysia, +60-3-8076-8745 • Mexico, +52 (442) 217-6235 • Singapore, +65-6773-9488 • Spain, +34 91 675 1292
 Taiwan, +886-7-288-5168 • United Kingdom, +44 (0) 115-964-0777