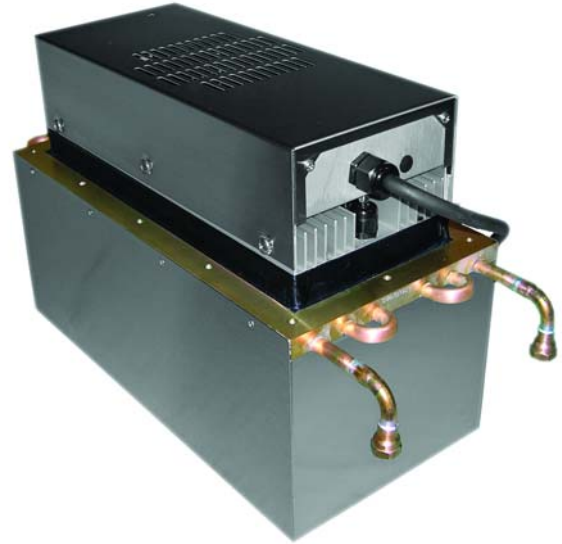


LHP-1200XP

Liquid Cooled Air Conditioner

Liquid Cooled
Through Mounted
NEMA-4X, CID2, CID1 & ATEX Zone 1
(No Agency Approvals)

120 VAC Input
613 BTU/HR



FEATURES

- Compact, (only 15" L X 8" W X 7.3" D)
- Can be mounted entirely inside purged enclosure or maintain purge when wall mounted
- Mounts and operates in any orientation: horizontal, vertical, etc.
- No moving parts except fans
- Environmentally safe
- No compressor, fluorocarbons or filters
- Virtually maintenance-free operation
- Stainless steel exterior housing
- Operating ambient/coolant temperature range 0/+70 °C
- Operating enclosure temperature range -10/+60 °C
- Weight 21 LBS.

INPUTS

Voltage	120 VAC
Current, Active	3.7 AMPS
Coolant Flow	> 0.3 GPM (1.0 LPM)

PERFORMANCE RATINGS

Cooling (Traditional)	613 BTU/HR
Cooling (Din 3168)	180 WATTS
Cooling COP (at L35 L35)	0.41
Weight	21 LBS.

CONTROL TEMPERATURES

Temp. Control	Active Heat °C	ECO-Mode °C	Active Cool °C
TC-1F	-	-	35
TC-6F	-	-	25 or 35
TC-3F	10	-	35

INCLUDES

- Integral power supply
- Mounting gasket and hardware
- Power input cord
- In/Out 1/4-18 NPT connectors for coolant

CONFIGURATIONS

MODEL	PART NUMBER	NOTES	TEMPERATURE CONTROL	ENVIRONMENT
LHP-1200XP	2-3090-2-027	Cool only	None	NEMA-4X IP 56, CI D2
LHP-1200XP	2-3080-2-028	Cool only	TC-6F	NEMA-4X IP 56, CI D2
LHP-1200XP	2-30F0-2-029	Cool only	TC-1F	NEMA-4X IP 56, CID2
LHP-1200XP	2-3050-2-030	Cool only	EXT*	NEMA-4X IP 56, CI D2
LHP-1200XPHC	2-3030-3-031	Heat/Cool	TC-3F	NEMA-4X IP 56, CI D2
LHP-1200XPHC	2-3050-3-032	Heat/Cool	EXT*	NEMA-4X IP 56, CI D2
LHP-1200XP	2-3090-2-021	Cool only	None	NEMA-4X IP 56, CI D1 ATEX Zone 1
LHP-1200XP	2-3080-2-022	Cool only	TC-6F	NEMA-4X IP 56, CI D1 ATEX Zone 1
LHP-1200XP	2-30F0-2-023	Cool only	TC-1F	NEMA-4X IP 56, CI D1 ATEX Zone 1
LHP-1200XP	2-3050-2-024	Cool only	EXT*	NEMA-4X IP 56, CI D1 ATEX Zone 1
LHP-1200XPHC	2-3030-3-025	Heat/Cool	TC-3F	NEMA-4X IP 56, CI D1 ATEX Zone 1
LHP-1200XPHC	2-3050-3-026	Heat/Cool	EXT*	NEMA-4X IP 56, CI D1 ATEX Zone 1

* Unit is set for 5-32 VDC external signal, relay(s) included

Designed for Nema-4, Nema-4X, CID2, CID1 and ATEX Zone 1, **not certified**. ATEX certification will require full system approvals. All specifications subject to change without notice

LHP-1200X

MOUNTING STYLE

Through Mounted

ENVIRONMENTS SERVED

NEMA-4X IP 56, CID2, CID1, Zone 1

RATING (TRADITIONAL)

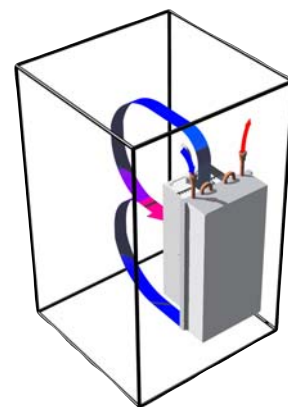
613 BTU/hr @ 0 °F ΔT

770 BTU/hr @ +20 °F ΔT

RATING (DIN 3168)

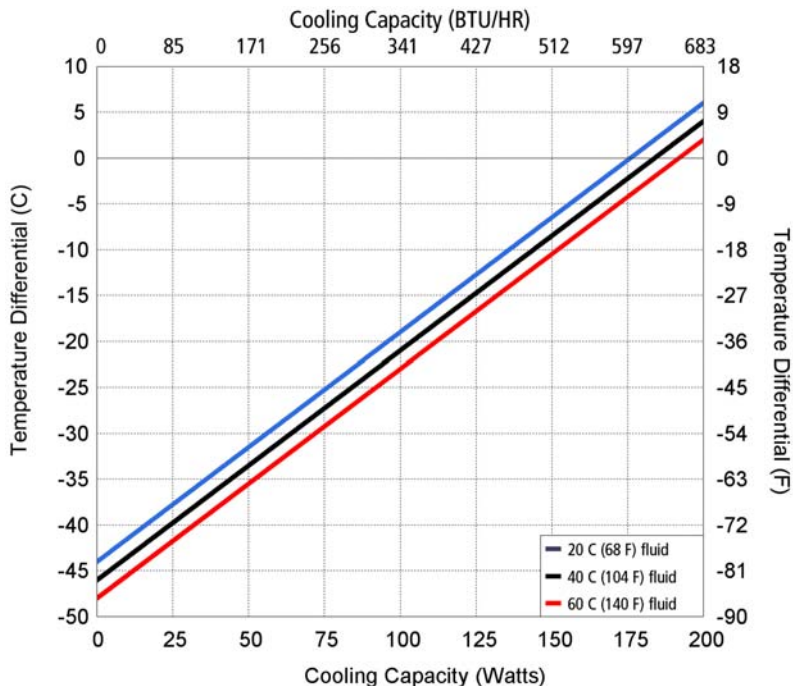
180 Watts L35 L35

125 Watts L35 L50



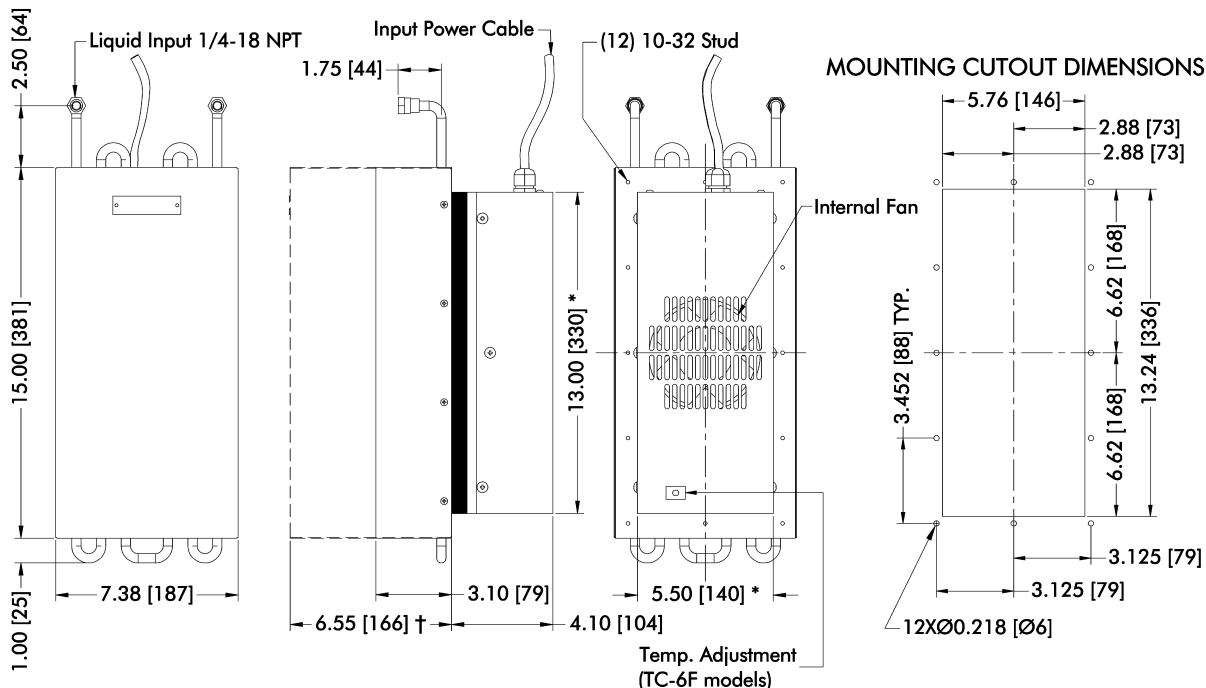
Air Flow Pattern

PERFORMANCE CURVE



Equation of line: $y = \Delta T(^{\circ}C)$ $x = \text{Capacity (Watts)}$			
Fluid Temp	20°C	40°C	60°C
Enclosure Air	$y = .25x - 44.0$	$y = .25x - 46.0$	$y = .25x - 48.0$
Cold Sink	$y = .19x - 44.0$	$y = .19x - 46.0$	$y = .19x - 48.0$

DIMENSIONS



* Dimension does not include hardware. Mounting hardware and gasket included but not shown.

† Dimension applies to XP versions.

Dimensions: Inches [Millimeters]