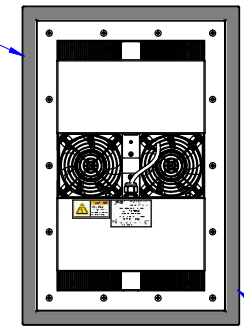
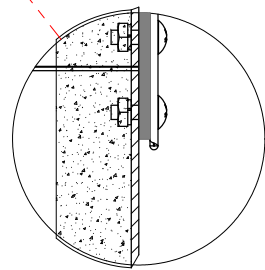


Install the gasket and clear the mounting holes as shown,
 Installez le joint et effacez les trous de fixation comme le montre,
 Installieren Sie die Dichtung und deaktivieren Sie die Befestigungslöcher wie gezeigt,
 Installare la guarnizione e pulire i fori di montaggio come mostrato



Use Butyl caulking or RTV caulking in place of the gasket for a better seal,
 Utilisez Butyl calfeutrage ou RTV en place du joint d'étanchéité pour une meilleure étanchéité,
 Utilisez Butyl calfeutrage ou RTV calfeutrage en place du joint d'étanchéité pour une meilleure étanchéité,
 Verwenden Butyl abdichten oder RTV Abdichten anstelle der Dichtung für einen besseren Dichtung,
 Utilizzare butile mastice o RTV calafataggio al posto della guarnizione per una migliore tenuta



English, Français, Deutsch, Italiano
 Dimensions: Inches [Millimeters]

Typical field mounting IHP series installation style A (installation from inside the enclosure),
 Montage typique IHP série Style A Installation (installation à partir de l'intérieur de l'enceinte),
 Typische montage IHP-Serie Installations Style A (montage von der Innenseite des Gehäuses),
 Tipico di montaggio IHP Serie Stile Installazione A (installazione all'interno dell'armadio)

UNLESS OTHERWISE SPECIFIED:		NAME	DATE	 ThermoElectric Cooling America Corporation Chicago, Illinois U.S.A.
DIMENSIONS ARE IN INCHES		DRAWN	AA 08/12/16	
TOLERANCES: FRACTIONAL ±		CHECKED		PROPRIETARY AND CONFIDENTIAL THE INFORMATION CONTAINED IN THIS DRAWING IS THE SOLE PROPERTY OF TECA CORPORATION. ANY REPRODUCTION IN PART OR AS A WHOLE WITHOUT THE WRITTEN PERMISSION OF TECA CORPORATION IS PROHIBITED.
ANGULAR: MACH ± BEND ±				
TWO PLACE DECIMAL ±				
THREE PLACE DECIMAL ±				IHP-2259 SERIES (MOUNTING STYLE B) TYPICAL INSTALLATION
INTERPRET GEOMETRIC TOLERANCING PER:		SIZE	DWG. NO.	
MATERIAL		A	SK160822	
FINISH				
DO NOT SCALE DRAWING		S0684		SHEET 1 OF 1