

Product Information Packet

Model AHP-1501

Thru Mount, Solid State, NEMA-12, 250 VDC Air Conditioner

With TC-6F Temperature Control

Part #0-218C-0-000

Thank you for your purchase. Information has been enclosed regarding the installation, specifications, and wiring of your solid-state assembly. Please read and follow all instructions carefully before installation. Only qualified technicians should install this equipment.

If you have any questions regarding your equipment, please do not hesitate to call us at 773-342-4900, and we will be happy to assist you. We are open from 8:00 am-4:30 pm Central Time.

Included in this packet you will find:

Installation Notes for Air Conditioners

Product Literature and Specifications

Assembly Drawing # SK050532

Wiring Drawing # SK110613

Installation Drawing # SK050530

Temperature Control Information

Warranty Information



ThermoElectric Cooling America Corporation
4048 W. Schubert Avenue • Chicago, IL (U.S.A.) 60639
Ph: 773/342-4900 Fx: 773/342-0191
sales@thermoelectric.com www.thermoelectric.com

Important Installation Notes for Air Conditioners

Mounting Styles: Both 'thru mount' and 'flush mount' units can be positioned in any orientation and on any enclosure surface. It is important to consider interior air flow patterns when determining the mounting location. Also of importance is an unrestricted flow of ambient air thru the hot side heat exchanger. Ease of access and inspection must be considered for those applications in particularly severe environments which may require occasional maintenance.

Vertical (Side/Front/Back) Mounting:

Vertical mounting refers to the vertical direction of the cold side or interior fins and is recommended for applications with high humidity, poor and incomplete cabinet seals or any condition which may cause the cold side fins to be maintained at temperatures below the dew point for long periods of time allowing for the formation of condensation. The vertical fin direction provides a drip path whereupon condensation can be collected via a moisture removal system (standard on FHP-units) or a drip pan positioned below the cold side fins. Drip pans are optional for thru mount units.



Condensate Removal System:

All FHP-Series and AHP-1400 air conditioners contain a built-in condensate removal system. The condensate kit consists of a antifungal sponge with a condensate wick. PVC tubing is also provided for drainage. Drip pans are optional for thru mount units which must be evaluated on an individual basis. Equations defining a relationship between the cold side fin and enclosure temperatures are provided to assist in the evaluation.

Top Mounting:

Though often the easiest location to mount it is often the most difficult to protect from condensation in this orientation due to the fin orientation, gravity and any susceptible components below. If a drip pan is employed by the end user use caution to place the pan far enough away from the internal fan to minimize the restriction of air flow. The pan should cover the fin ends as well as the fan area. When there is a choice, the vertical orientation is preferred by most users.

Maintenance:

Since the technology is solid-state, there are no filters, compressors, or fluorocarbons to maintain. The only moving parts are the fans. It is recommended for harsh or dirty environments that the heat sinks be cleaned from time to time. This can be accomplished by directing compressed air over the external fins or on NEMA 4 versions by hosing the unit down. This will increase the overall life and performance of the system.

Cautions:

Take care when mounting not to damage the seal between the hot and cold side sinks. Do not attempt to mount a unit to a warped surface or try to make the units mounting surface conform to an unflat surface. Do not pinch or damage any leads when mounting. Do not over tighten any installation screw, use reasonable force. Always mount with any condensate drain down. Do not compress the cold side between the hot side and any other surface. Do not obstruct the airflow on either side. When mounting consider the natural air flows of the enclosure. Connect power only after the installation is complete.

Notes on condensation:

Condensation occurs at the cold side fins when the surface temperature goes below the dew point. To reduce or remove condensate, consider the following:

- Regulate the Fin Temperature above the Dewpoint.
- Keep Enclosure Closed and Sealed from Outside Humidity.
- Use Desiccant (Moisture absorbing Granules.)
- Employ Condensate Removal System/Drip Pans.

If you have any questions regarding your installation, Please feel free to contact our technical department for assistance at 773-342-4900.

AHP-1501 Air Conditioner

Air Cooled
Thru Mount
NEMA-12 & NEMA-4

24 VDC Input

FEATURES

- Compact
- Mounts in multi-unit array for incremental capacity
- Weighs only 48 LBS. (22 KG.)
- Dual efficiency versions available, consult factory
- Environmentally safe
- No compressor, fluorocarbons or filters
- Virtually maintenance-free operation
- Stainless steel exterior housing



INCLUDES

- Temperature control
- Mounting gasket and hardware
- Power input leads
- Condensate removal system

OPTIONS

- 250 VDC configuration for crane applications available
- Other voltage configuration available (contact TECA)
- Other temperature settings for single set point control
- Custom finishes

SPECIFICATIONS

	MODEL	PART NUMBER	COP @ 0 °C ΔT L35 L35	VOLTAGE VDC	CURRENT AMPS.	WEIGHT LBS.(KG)	TEMP. CONTROL	CONDENSATE REMOVAL	OPERATING AMBIENT TEMPERATURE RANGE °C	OPERATING ENCLOSURE TEMPERATURE RANGE °C
N E M A 12	AHP-1501	0-2185-0-000	0.67	24 (16-28)	18	48(22)	TC-6F	Wick	-40/+70	-20/+70
	AHP-1501	0-21F5-0-000	0.67	24 (16-28)	18	48(22)	85°F (30°C)	Wick	-40/+70	-20/+70
	AHP-1501	0-2155-0-000	0.67	24 (16-28)	18	48(22)	EXT*	Wick	-40/+70	-20/+70
	AHP-1501HC	0-2135-1-000	0.67	24 (16-28)	18	48(22)	TC-3F	Wick	-40/+70	-20/+70
	AHP-1501HC	0-2115-1-000	0.67	24 (16-28)	18	48(22)	TC-7F	Wick	-40/+70	-20/+70
	AHP-1501HC	0-2155-1-000	0.67	24 (16-28)	18	48(22)	EXT*	Wick	-40/+70	-20/+70
N E M A 4	AHP-1501HC	0-21H5-1-000	0.67	24 (16-28)	18	48(22)	TC-4600	Wick	-40/+70	-20/+70
	AHP-1501XE	0-2185-4-000	0.67	24 (16-28)	18	48(22)	TC-6F	Wick	-40/+70	-20/+70
	AHP-1501XE	0-21F5-4-000	0.67	24 (16-28)	18	48(22)	85°F (30°C)	Wick	-40/+70	-20/+70
	AHP-1501XE	0-2155-4-000	0.67	24 (16-28)	18	48(22)	EXT*	Wick	-40/+70	-20/+70
	AHP-1501XEHC	0-2135-5-000	0.67	24 (16-28)	18	48(22)	TC-3F	Wick	-40/+70	-20/+70
	AHP-1501XEHC	0-2115-5-000	0.67	24 (16-28)	18	48(22)	TC-7F	Wick	-40/+70	-20/+70
	AHP-1501XEHC	0-2155-5-000	0.67	24 (16-28)	18	48(22)	EXT*	Wick	-40/+70	-20/+70
	AHP-1501XEHC	0-21H5-5-000	0.67	24 (16-28)	18	48(22)	4600	Wick	-40/+70	-20/+70

* Unit is set for 5-32 VDC external signal, H-Bridge quad pack relay(s) included

AHP-1501

MOUNTING STYLE

Thru Mount

ENVIRONMENTS SERVED

NEMA-12 IP 52

NEMA-4 IP 56

RATING (TRADITIONAL)

1000 BTU/hr @ 0 °F ΔT

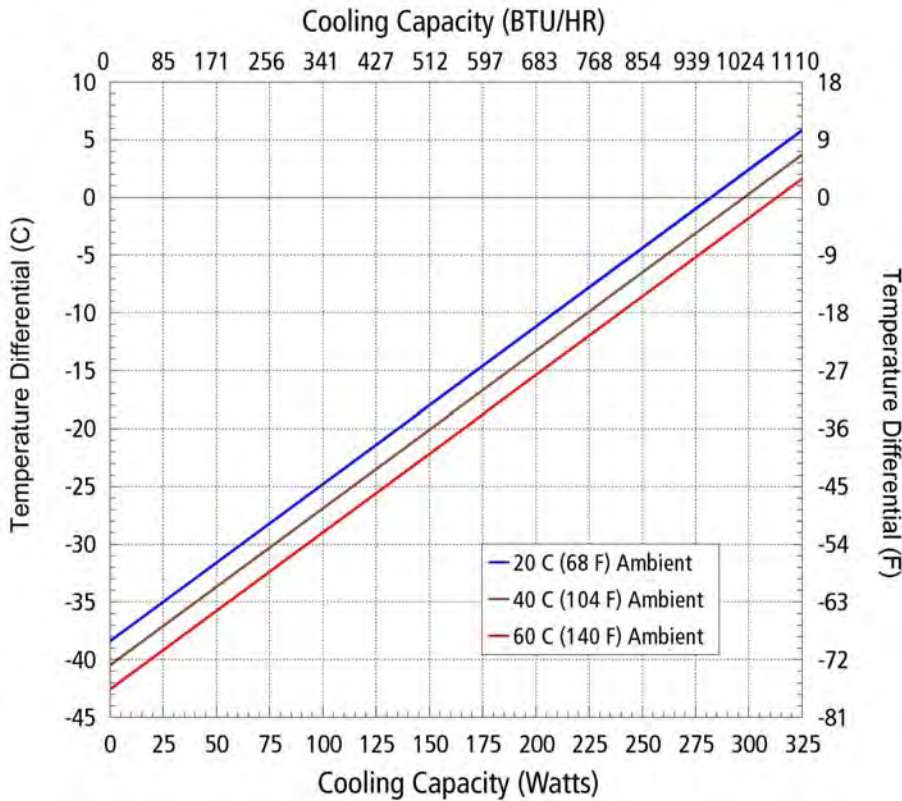
1300 BTU/hr @ +20 °F ΔT *

RATING (DIN 3168)

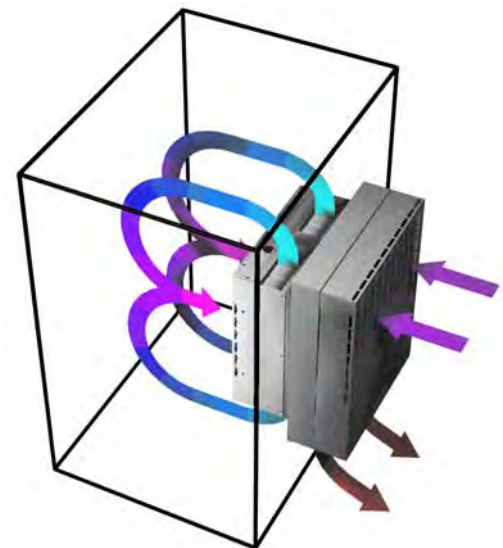
300 Watts L35 L35

187 Watts L35 L50

* See page 10

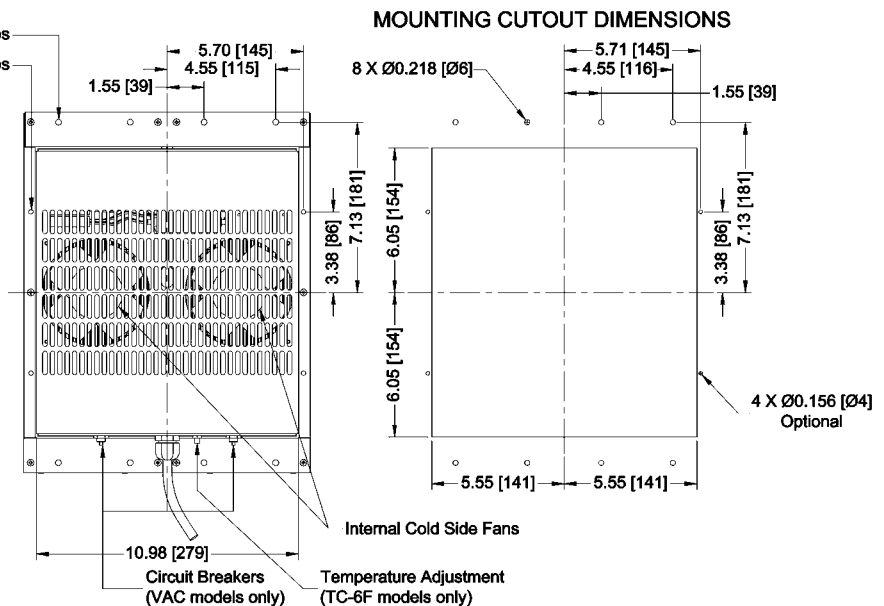
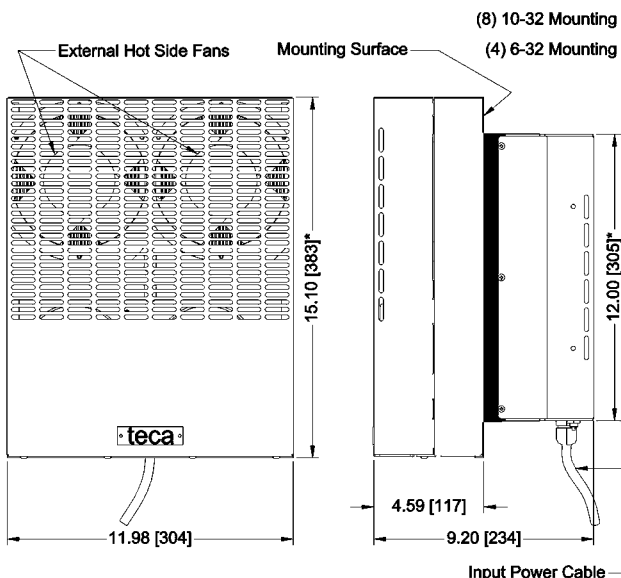


Equation of line: $y = \Delta T(^{\circ}\text{C})$ $x = \text{Capacity (Watts)}$			
Ambient Temp	20°C	40°C	60°C
Enclosure Air	$y = .136x - 38.4$	$y = .136x - 40.5$	$y = .136x - 42.6$
Cold Sink	$y = .10x - 38.4$	$y = .10x - 40.5$	$y = .10x - 42.6$



Air Flow Pattern

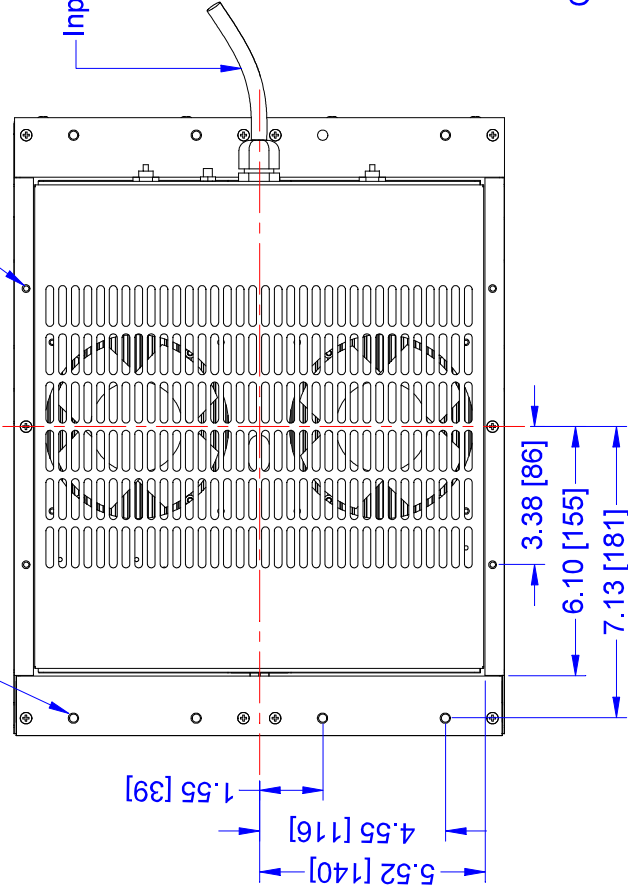
AHP-1501 DIMENSIONS



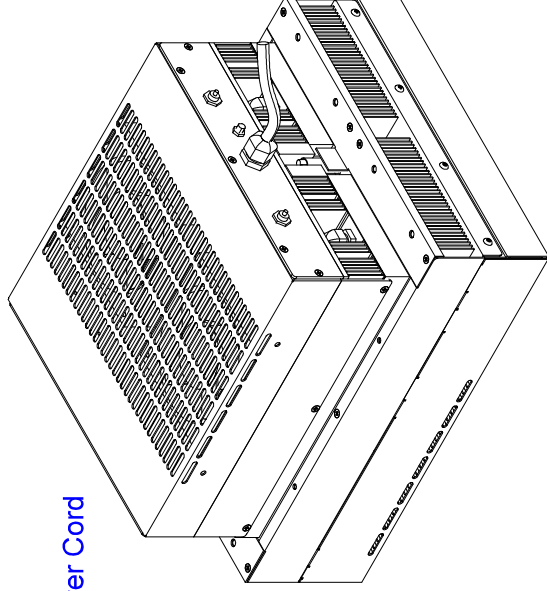
*Dimension does not include hardware and sealant.
Mounting hardware, drip pan and gasket included but not shown.
Dimensions: Inches [Millimeters]

4 X 6-32 Mounting taps
(optional)

8 X 10-32 Mounting taps

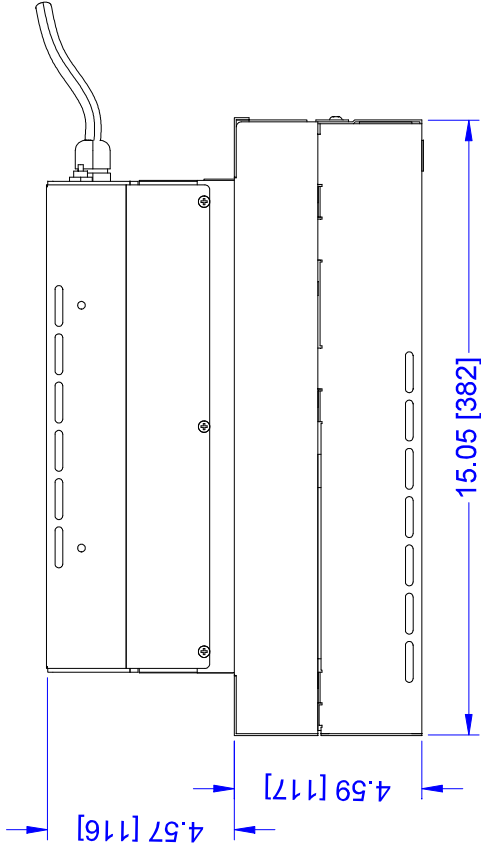


Input Power Cord



Circuit Breakers

Temperature adjustment

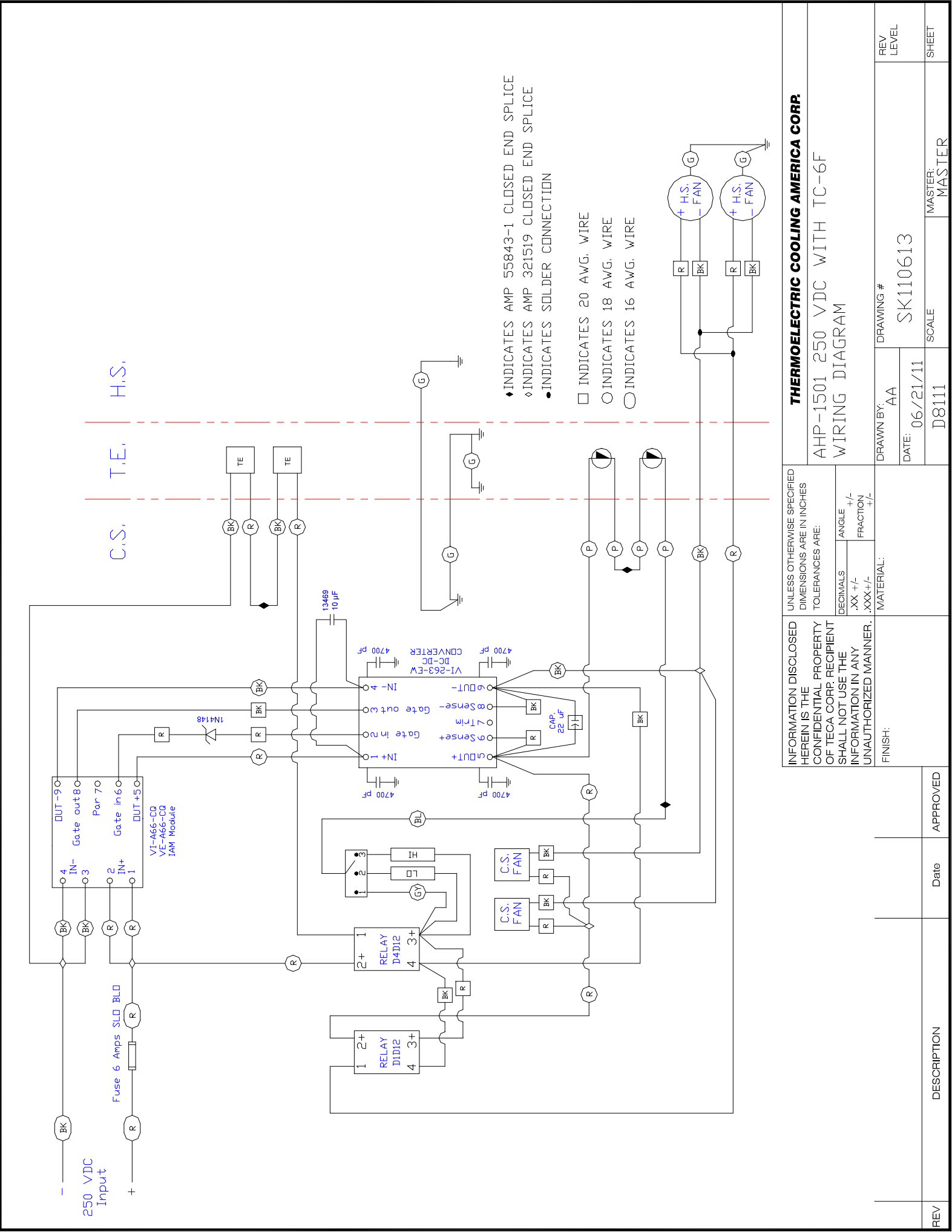


11.99 [305]

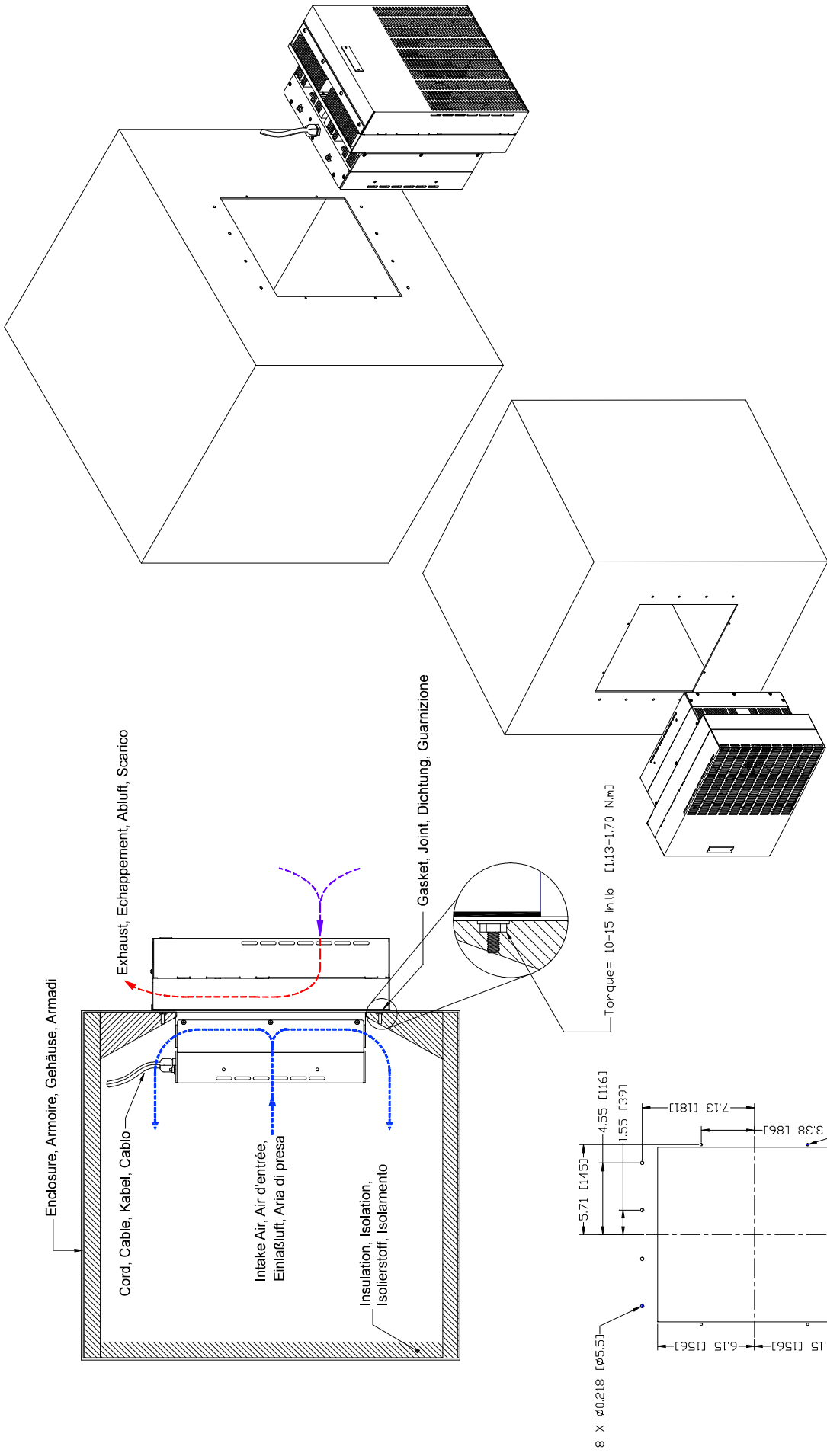
Notes:

- Dimensions: Inches [Millimeters]
- Dimensions do not include hardware

REV	DESCRIPTION	Date	APPROVED	INFORMATION DISCLOSED HEREIN IS THE CONFIDENTIAL PROPERTY OF TECA CORP. RECIPIENT SHALL NOT USE THE INFORMATION IN ANY UNAUTHORIZED MANNER. FINISH:	UNLESS OTHERWISE SPECIFIED DIMENSIONS ARE IN INCHES TOLERANCES ARE: DECIMALS .XX +/- FRACTION XXX +/- ANGLE +/- MATERIAL:	THERMoeLECTRIC COOLING AMERICA CORP. AHP-1501 SERIES ASSEMBLY	DRAWING # AA DATE: 05/25/05 SCALE D6459	REV LEVEL SK050532 MASTER: MASTER	SHEET
-----	-------------	------	----------	--	---	---	---	--	-------



Mounting, Monture, Montage, Montaggio



Alternate, Alternative, Alternativa

English, Français, Deutsch, Italiano
Dimensions: Inches [Millimeters]

INFORMATION DISCLOSED HEREIN IS THE CONFIDENTIAL PROPERTY OF TECA CORP. RECIPIENT SHALL NOT USE THE INFORMATION IN ANY UNAUTHORIZED MANNER.		UNLESS OTHERWISE SPECIFIED DIMENSIONS ARE IN INCHES		TOLERANCES ARE:		THERMOELECTRIC COOLING AMERICA CORP.	
FINISH:		DECIMALS		ANGLE		AHP-1501 SERIES	
		.XX +/-		+/-		FIELD MOUNTING	
		.XXX +/-		+/-			
		MATERIAL:		DRAWN BY: AA		DRAWING #	
				DATE: 05/24/05		SK050530	
				SCALE		MASTER:	
				D6457		REV	
						LEVEL	
						A	
						SHEET	

Control/Thermostats

The model **TC-6F** (Cool Only) thermostat is designed using two magnetic reed switches in conjunction with a solid state relay. A three position switch is provided to adjust between the following settings:

Position	Control Temp.	Tolerance	Reset Differential
1	35°C	+/-5°C	10°C Maximum
2	25°C	+/-5°C	10°C Maximum
3	Constant On		

The model **TC-3F** (Heat/Cool) thermostat incorporates the same technology as the TC-6F. It contains a single setting each for both heating and cooling as referenced below:

Mode	Control Temp.	Tolerance	Reset Differential
Cooling	35°C	+/-5°C	-10°C Maximum
Heating	15 °C	+/-5°C	+10°C Maximum

LIMITED WARRANTY

In the event a defect in material or workmanship is discovered in any of TECA's products within one year after the date they are delivered to Buyer, and if: (a) TECA is notified of the defect in writing by certified mail within 14 days of the date of discovery; (b) TECA may then either, at its sole discretion, inspect the product at Buyer's location, or require that the product be made available at Buyer's expense at TECA's premises for TECA's inspection within 14 days of the date of notification; and (c) the products are defective and the defects result from faulty materials and/or workmanship and not in any way from accident, misuse, misapplication, mishandling, modification, or alteration by the Buyer or the shipper, then TECA shall, at its sole option, repair or exchange defective products free of charge to Buyer, or credit to buyer the price of the defective products. ALL OTHER WARRANTIES, EXPRESS OR IMPLIED, ARE EXCLUDED, INCLUDING BUT NOT LIMITED TO THE IMPLIED WARRANTIES OF MERCHANTABILITY AND FITNESS FOR A PARTICULAR PURPOSE. IN NO EVENT SHALL TECA BE LIABLE FOR ANY CLAIM BASED UPON BREACH OF EXPRESS OR IMPLIED WARRANTY OR ANY OTHER DAMAGES WHETHER SPECIAL, INDIRECT, INCIDENTAL, CONSEQUENTIAL, LOST PROFITS, BUSINESS INTERRUPTION, OR LOSS OF BUSINESS OR CUSTOMER RELATIONSHIPS.

RETURNED GOODS, RESTOCKING CHARGES

In order to return merchandise for any reason (repair, replacement, or credit) a return authorization number must be issued by TECA. New merchandise may not be returned for credit beyond 60 days from shipment. Charges for incidental or other damages may also be made. All returned goods must be sent freight prepaid. A restocking charge of 15% will apply. On special equipment and custom modified equipment orders, additional incremental cancellation charges may be made.