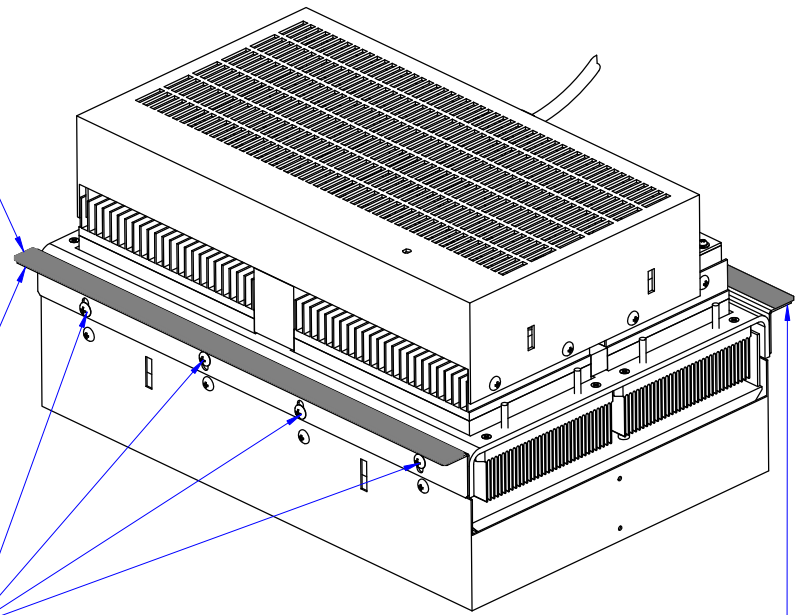


Step 1: Remove (4) 10-32 Truss Head screws



Step 2: Secure Bracket in place using the screws removed in previous step

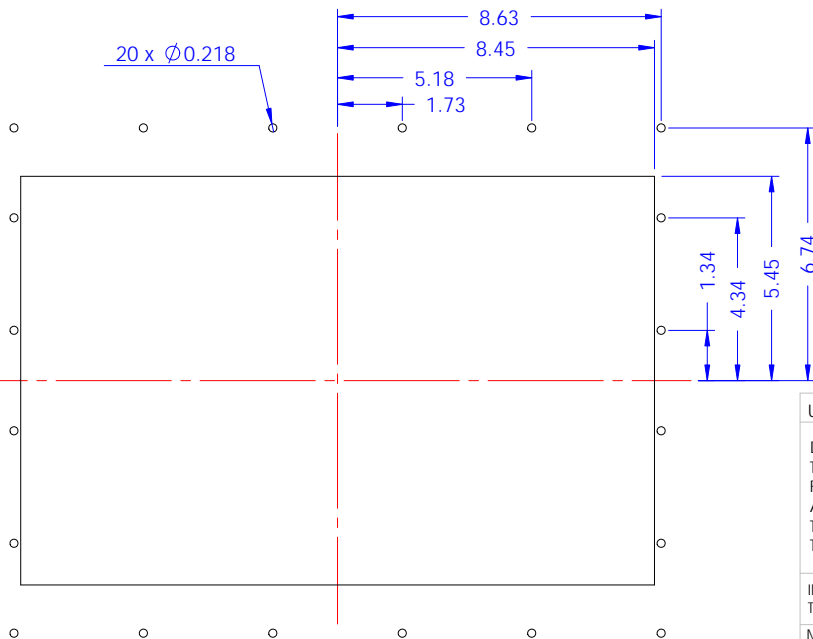
Step 3: Repeat with the other side
Do one side at a time

Strip Gasket

MA-1800 Bracket

Step 4: Apply strip gasket

Note: When installing the air conditioner on the enclosure, poke holes through the strip gasket and push the fasteners through.



Mounting cutout for AHP-1800 series
with MA-1800 mounting bracket

UNLESS OTHERWISE SPECIFIED:

DIMENSIONS ARE IN INCHES
TOLERANCES:
FRACTIONAL ±
ANGULAR: MACH ± BEND ±
TWO PLACE DECIMAL ±
THREE PLACE DECIMAL ±

INTERPRET GEOMETRIC
TOLERANCING PER:

MATERIAL

FINISH

DO NOT SCALE DRAWING

NAME DATE

DRAWN AA 03/01/16

CHECKED

PROPRIETARY AND CONFIDENTIAL
THE INFORMATION CONTAINED IN THIS
DRAWING IS THE SOLE PROPERTY OF
TECA CORPORATION.

ANY REPRODUCTION IN PART OR AS A WHOLE
WITHOUT THE WRITTEN PERMISSION OF
TECA CORPORATION IS PROHIBITED.



MA-1800
AHP-1800 SERIES MOUNTING BRACKET
INSTALLATION

SIZE DWG. NO. REV

A SK160302

S0502

SHEET 1 OF 1