

Product Information Packet

Model FHP-451XEHC

120 VAC Flush Mounted Solid State Air Conditioner

Nema-4, With TC-3F Temperature Control

Part #7-F030-5-000

Thank you for your purchase. Information has been enclosed regarding the installation, specifications, and wiring of your solid-state assembly. Please read and follow all instructions carefully before installation. Only qualified technicians should install this equipment.

If you have any questions regarding your equipment, please do not hesitate to call us at 773-342-4900, and we will be happy to assist you. We are open from 8:00 am-4:30 pm Central Time.

Included in this packet you will find:

Product Literature and Specifications

Assembly Drawing # SK110824

Wiring Drawing # SK170439

Installation Drawing # SK110826

Warranty Information



ThermoElectric Cooling America Corporation
4048 W. Schubert Avenue • Chicago, IL (U.S.A.) 60639
Ph: 773/342-4900 Fx: 773/342-0191
sales@thermoelectric.com www.thermoelectric.com

Important Installation Notes for Air

Mounting Styles: Both 'thru mount' and 'flush mount' units can be positioned in any orientation and on any enclosure surface. It is important to consider interior air flow patterns when determining the mounting location. Also of importance is an unrestricted flow of ambient air thru the hot side heat exchanger. Ease of access and inspection must be considered for those applications in particularly severe environments which may require occasional maintenance.

Vertical (Side/Front/Back) Mounting:

Vertical mounting refers to the vertical direction of the cold side or interior fins and is recommended for applications with high humidity, poor and incomplete cabinet seals or any condition which may cause the cold side fins to be maintained at temperatures below the dew point for long periods of time allowing for the formation of condensation. The vertical fin direction provides a drip path whereupon condensation can be collected via a moisture removal system (standard on FHP-units) or a drip pan positioned below the cold side fins. Drip pans are optional for thru mount units.



Condensate Removal System:

All FHP-Series and AHP-1400 air conditioners contain a built-in condensate removal system. The condensate kit consists of a antifungal sponge with a condensate wick. PVC tubing is also provided for drainage. Drip pans are optional for thru mount units which must be evaluated on an individual basis. Equations defining a relationship between the cold side fin and enclosure temperatures are provided to assist in the evaluation.

Top Mounting:

Though often the easiest location to mount it is often the most difficult to protect from condensation in this orientation due to the fin orientation, gravity and any susceptible components below. If a drip pan is employed by the end user use caution to place the pan far enough away from the internal fan to minimize the restriction of air flow. The pan should cover the fin ends as well as the fan area. When there is a choice, the vertical orientation is preferred by most users.

Maintenance:

Since the technology is solid-state, there are no filters, compressors, or fluorocarbons to maintain. The only moving parts are the fans. It is recommended for harsh or dirty environments that the heat sinks be cleaned from time to time. This can be accomplished by directing compressed air over the external fins or on NEMA 4 versions by hosing the unit down. This will increase the overall life and performance of the system.

Cautions:

Take care when mounting not to damage the seal between the hot and cold side sinks. Do not attempt to mount a unit to a warped surface or try to make the units mounting surface conform to an unflat surface. Do not pinch or damage any leads when mounting. Do not over tighten any installation screw, use reasonable force. Always mount with any condensate drain down. Do not compress the cold side between the hot side and any other surface. Do not obstruct the airflow on either side. When mounting consider the natural air flows of the enclosure. Connect power only after the installation is complete.

Notes on condensation:

Condensation occurs at the cold side fins when the surface temperature goes below the dew point. To reduce or remove condensate, consider the following:

- Regulate the Fin Temperature above the Dewpoint.
- Keep Enclosure Closed and Sealed from Outside Humidity.
- Use Desiccant (Moisture absorbing Granules.)
- Employ Condensate Removal System/Drip Pans.

If you have any questions regarding your installation, Please feel free to contact our technical department for assistance at 773-342-4900.

FHP-451 Air Conditioner

Air Cooled
Flush Mounted
Nema-12, Nema-4

120 VAC or 240 VAC
300 BTU/HR

FEATURES

- Compact (only 10" X 5.86" X 9")
- Mounts and operates in any orientation: horizontal, vertical, etc
- Low vibration and noise
- No moving parts except fans
- Environmentally safe
- No compressor, fluorocarbons or filters
- Virtually maintenance-free operation
- Stainless steel exterior housing
- Efficient heat exchanger mode (ECO-Mode)
- Operating ambient temperature range -40/+70 °C
- Operating enclosure temperature range -10/+60 °C
- Weight 18 LBS.

CONTROL TEMPERATURES

Active Cooling (TC-1F, TC-3F)	35 °C
Active Heating (TC-3F)	10 °C
Typical Hysteresis	5 °C
Operating Ambient	-40/+70 °C
Operating Enclosure	-10/+60 °C

POWER INPUTS

Voltage	120 or 240 VAC
Current, Active	1.3 / 0.71 AMPS



PERFORMANCE RATINGS

Cooling (Traditional)	342 BTU/HR
Cooling (Din 3168)	102 WATTS
Cooling COP (at L35 L35)	0.65

INCLUDES

- Temperature controller
- Mounting gasket
- Mounting hardware
- Integral power input cord

CONFIGURATIONS

MODEL	PART NUMBER	NOTES	VOLTAGE VAC	CURRENT AMPS	TEMPERATURE CONTROL	ENVIRONMENT
FHP-451	7-F090-0-000	Cool only	120	1.3	None	Nema-12, IP 52
FHP-451	7-F080-0-000	Cool only	120	1.3	TC-6F	Nema-12, IP 52
FHP-451	7-F0F0-0-000	Cool only	120	1.3	TC-1F	Nema-12, IP 52
FHP-451	7-F050-0-000	Cool only	120	1.3	EXT*	Nema-12, IP 52
FHP-451HC	7-F030-1-000	Heat/Cool	120	1.3	TC-3F	Nema-12, IP 52
FHP-451XE	7-F090-4-000	Cool only	120	1.3	None	Nema-4, IP 56
FHP-451XE	7-F080-4-000	Cool only	120	1.3	TC-6F	Nema-4, IP 56
FHP-451XE	7-F0F0-4-000	Cool only	120	1.3	TC-1F	Nema-4, IP 56
FHP-451XE	7-F050-4-000	Cool only	120	1.3	EXT*	Nema-4, IP 56
FHP-451XEHC	7-F030-5-000	Heat/Cool	120	1.3	TC-3F	Nema-4, IP 56
FHP-452	7-F092-0-000	Cool only	240	0.70	None	Nema-12, IP 52
FHP-452	7-F082-0-000	Cool only	240	0.70	TC-6F	Nema-12, IP 52
FHP-452	7-F0F2-0-000	Cool only	240	0.70	TC-1F	Nema-12, IP 52
FHP-452	7-F052-0-000	Cool only	240	0.70	EXT*	Nema-12, IP 52
FHP-452HC	7-F032-1-000	Heat/Cool	240	0.70	TC-3F	Nema-12, IP 52
FHP-452XE	7-F092-4-000	Cool only	240	0.70	None	Nema-4, IP 56
FHP-452XE	7-F082-4-000	Cool only	240	0.70	TC-6F	Nema-4, IP 56
FHP-452XE	7-F0F2-4-000	Cool only	240	0.70	TC-1F	Nema-4, IP 56
FHP-452XE	7-F052-4-000	Cool only	240	0.70	EXT*	Nema-4, IP 56
FHP-452XEHC	7-F032-5-000	Heat/Cool	240	0.70	TC-3F	Nema-4, IP 56

* For controller options contact TECA; Heating function via reverse polarity (controller dependent)

FHP-451**MOUNTING STYLE**

Flush Mounted

ENVIRONMENTS SERVED

NEMA-12 IP 52

NEMA-4 IP 56

RATING (TRADITIONAL)

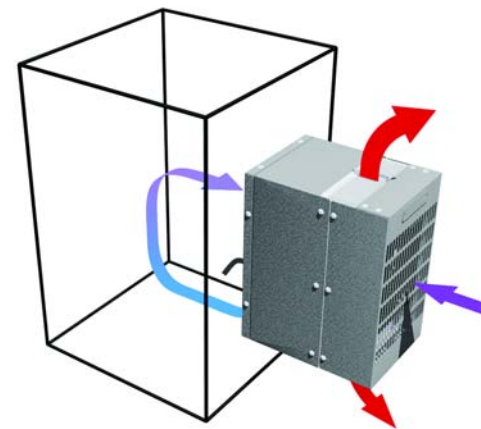
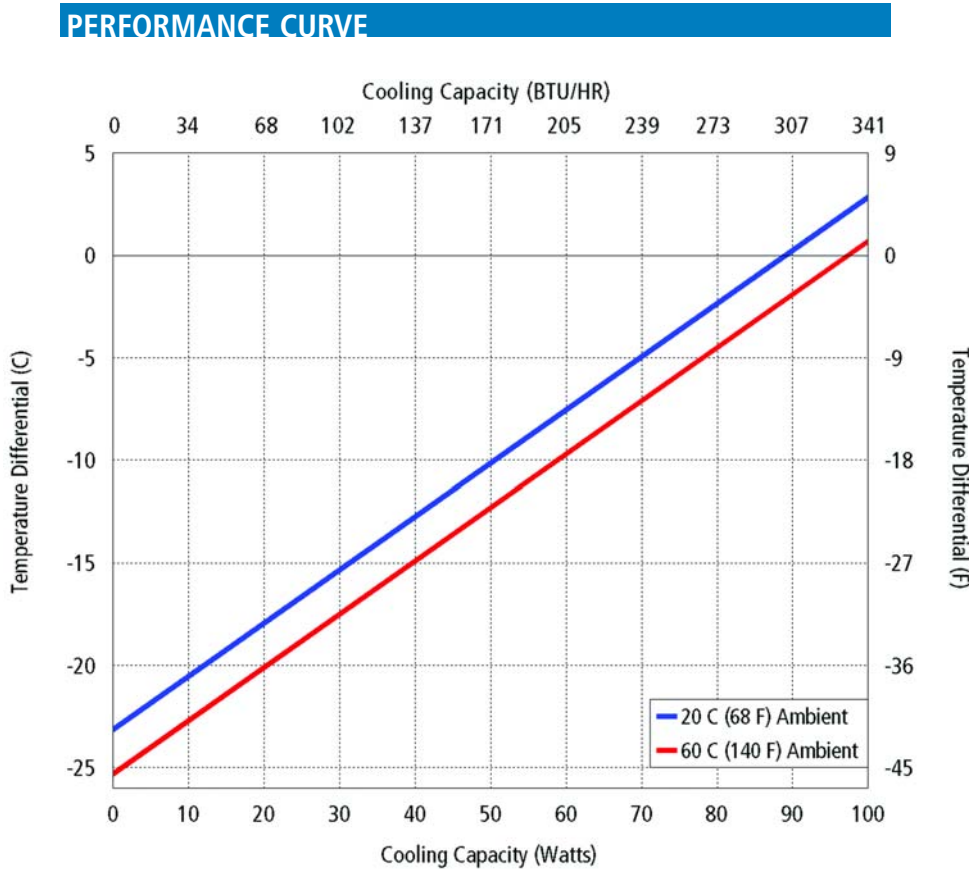
300 BTU/hr @ 0 °F ΔT

447 BTU/hr @ +20 °F ΔT

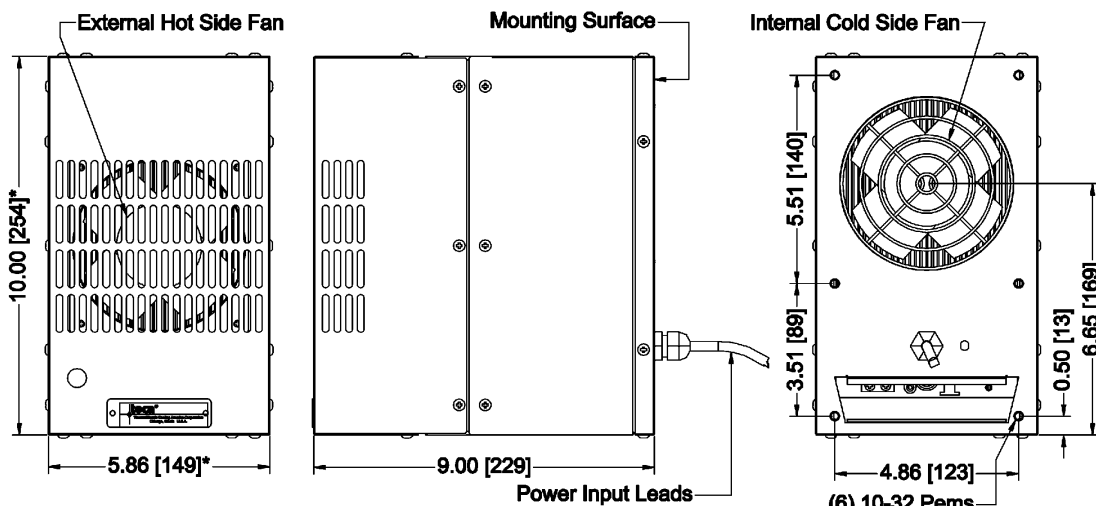
RATING (DIN 3168)

91 Watts L35 L35

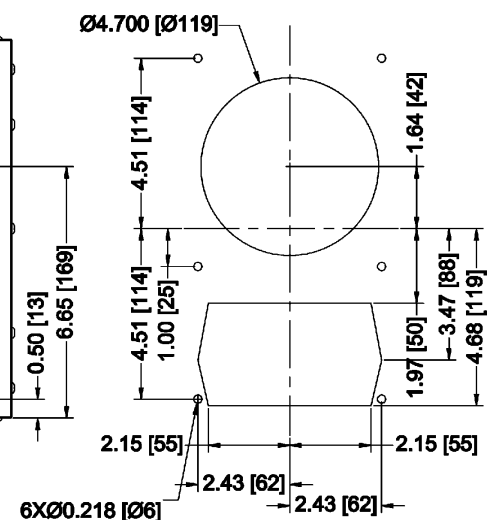
38 Watts L35 L50



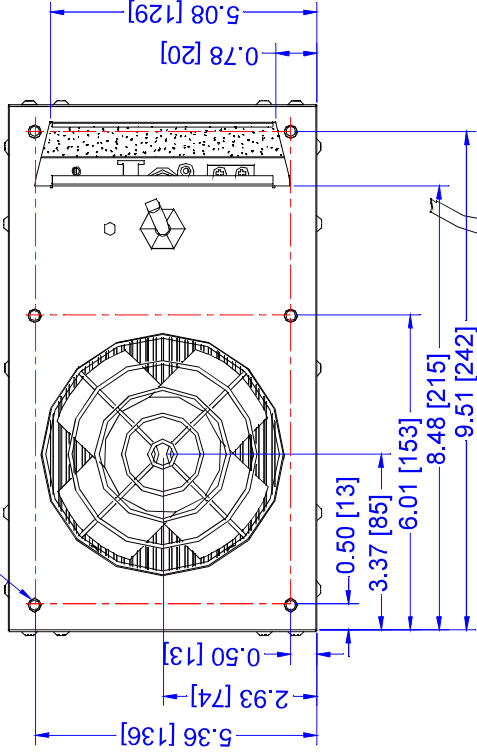
Air Flow Pattern

DIMENSIONS

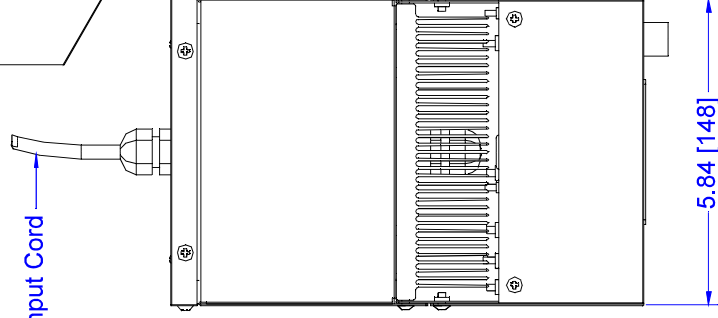
* Dimension does not include hardware and gasket
 Mounting hardware and gasket included but not shown
 Dimensions: Inches [Millimeters]

MOUNTING CUTOUT DIMENSIONS

6 X 10-32 Threaded Inserts

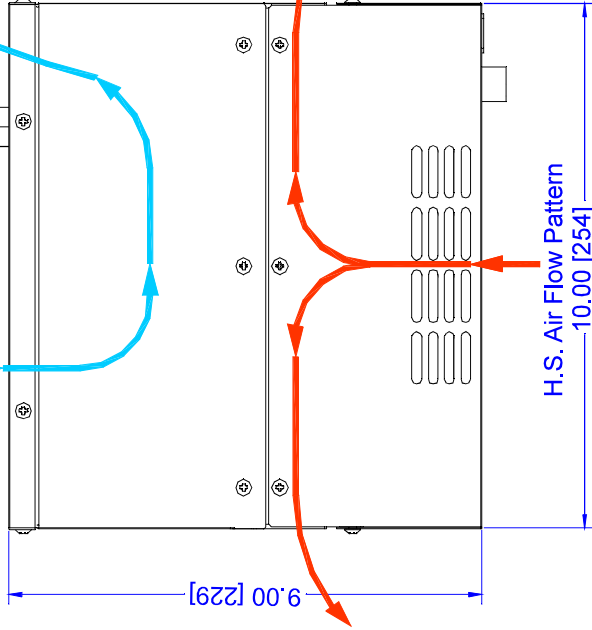


C.S. Air Flow Pattern



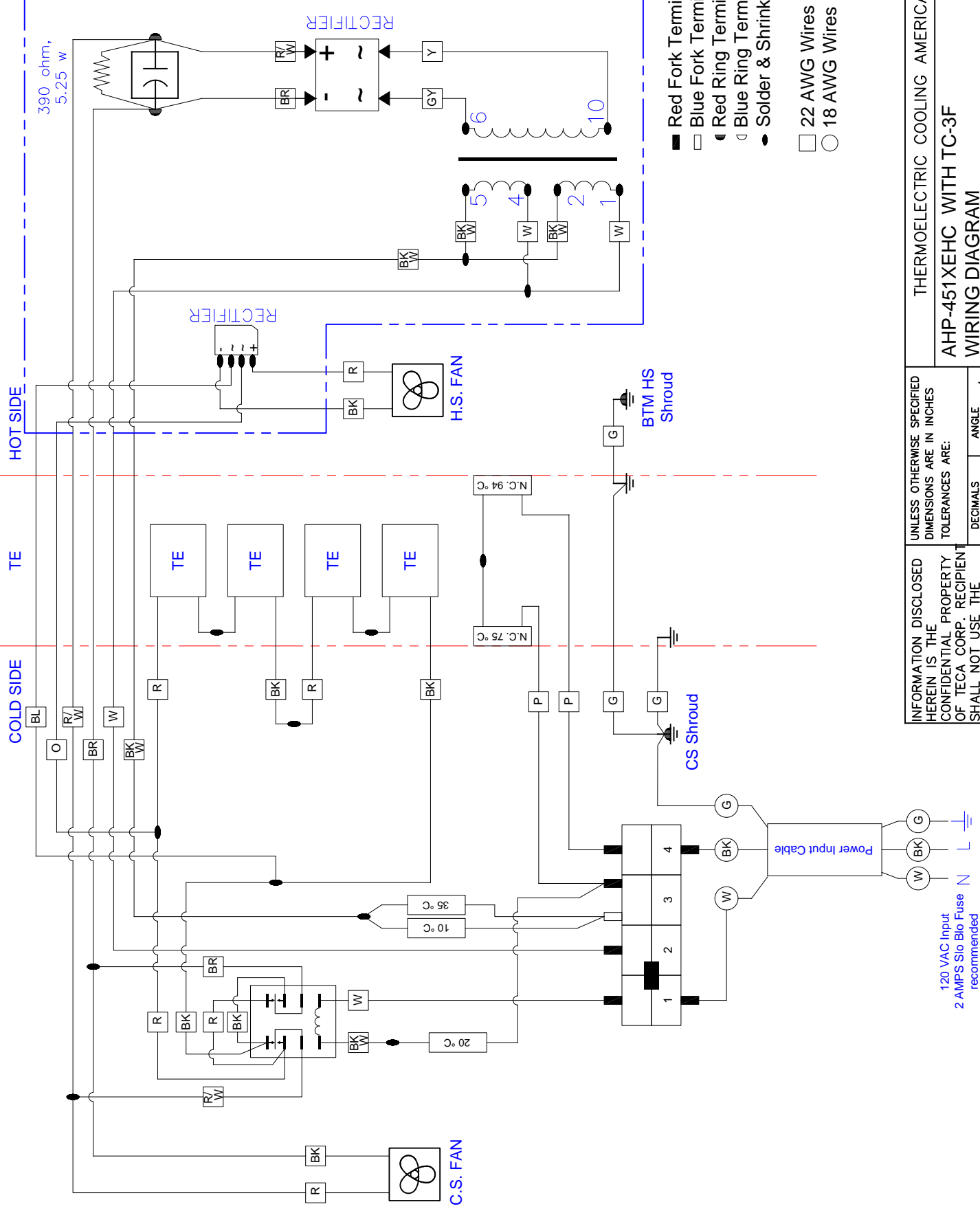
Power Input Cord

H.S. Air Flow Pattern
10.00 [254]




Dimensions: Inches [Millimeters]

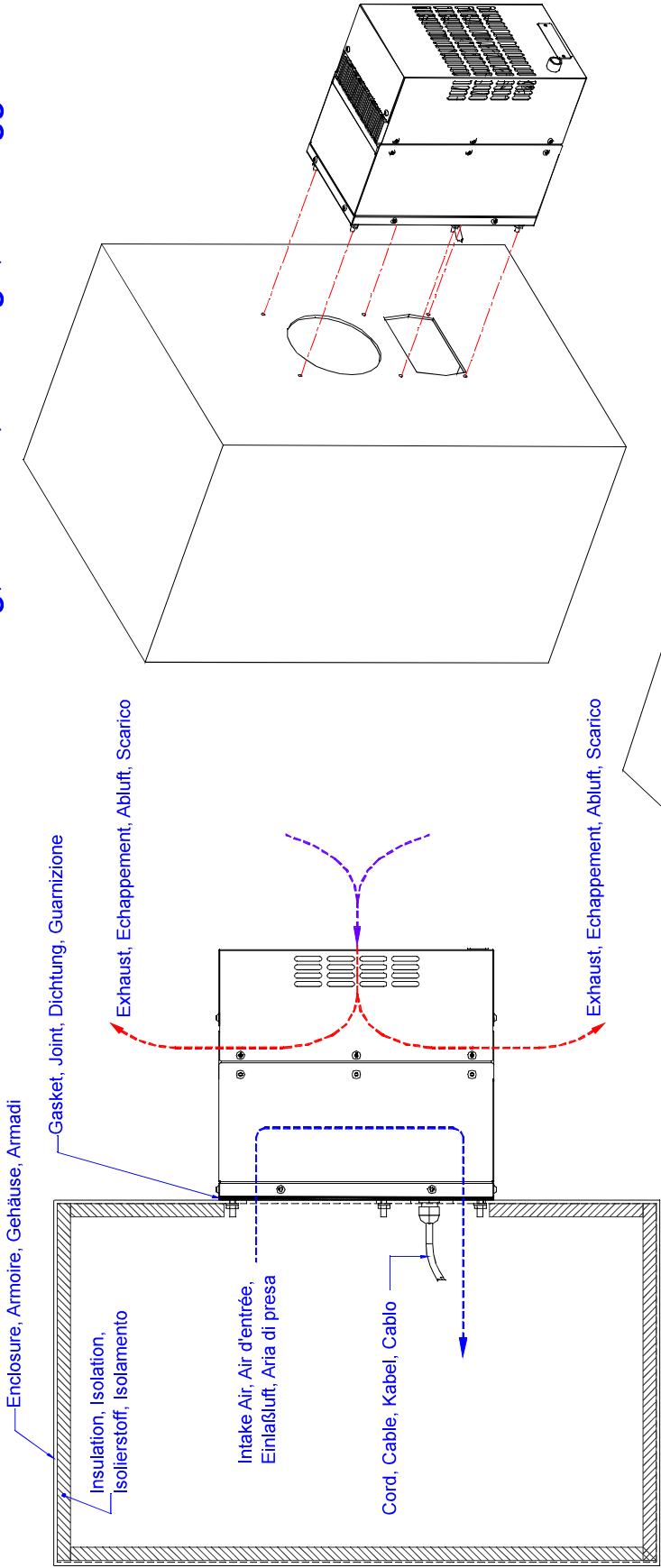
REV		DESCRIPTION	Date	APPROVED
<div>INFORMATION DISCLOSED HEREIN IS THE CONFIDENTIAL PROPERTY OF TECA CORP. RECIPIENT SHALL NOT USE THE INFORMATION IN ANY UNAUTHORIZED MANNER.</div> <div>FINISH:</div>				
UNLESS OTHERWISE SPECIFIED DIMENSIONS ARE IN INCHES		TOLERANCES ARE:		
DECIMALS		ANGLE		
XX +/-		+/-		
XXX +/-		FRACTION		
		+/-		
MATERIAL:				
DRAWN BY: AA		DRAWING #		
DATE: 08/09/2011		SK110824		
D8170		SCALE		MASTER: MASTER
				SHEET



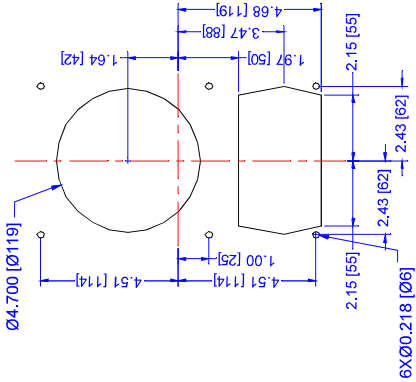
- Red Fork Terminals
- Blue Fork Terminals
- Red Ring Terminals
- ◊ Blue Ring Terminals
- Solder & Shrink Tube Connection
- 22 AWG Wires
- 18 AWG Wires

REV	DESCRIPTION	Date	APPROVED	<div><div><div>W</div><div>BK</div><div>G</div></div><div><div>120 VAC Input</div><div>2 AMPS Slo Blo Fuse recommended</div></div><div><div>N</div><div>L</div><div></div></div></div>	INFORMATION DISCLOSED HEREIN IS THE CONFIDENTIAL PROPERTY OF TECA CORP. RECIPIENT SHALL NOT USE THE INFORMATION IN ANY UNAUTHORIZED MANNER.	FINISH:	MATERIAL:	UNLESS OTHERWISE SPECIFIED DIMENSIONS ARE IN INCHES TOLERANCES ARE: <table><tr><td>DECIMALS</td><td>ANGLE</td></tr><tr><td>.XX +/-</td><td>+/-</td></tr><tr><td>.XXX +/-</td><td>+/-</td></tr></table>	DECIMALS	ANGLE	.XX +/-	+/-	.XXX +/-	+/-	THERMOELECTRIC COOLING AMERICA CORP.		
									DECIMALS	ANGLE							
									.XX +/-	+/-							
									.XXX +/-	+/-							
AHP-451XEHC WITH TC-3F WIRING DIAGRAM																	
									DRAWN BY: AA	DRAWING #	REV LEVEL						
									DATE: 04/25/2017	SK170439							
									S0968		SCALE	MASTER: MASTER	SHEET				

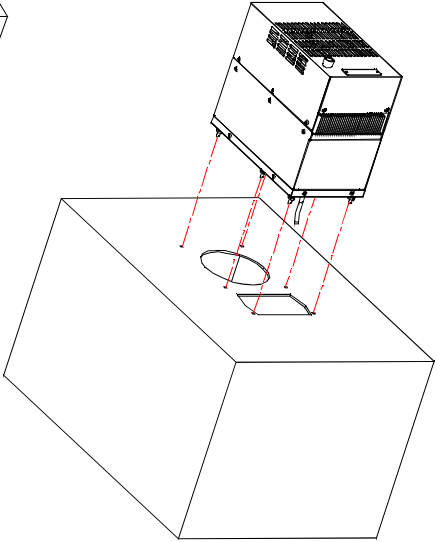
Mounting, Monture, Montage, Montaggio



MOUNTING CUTOUT DIMENSIONS



Alternate, Alternative, Alternativa



English, Français, Deutsch, Italiano
Dimensions: Inches [Millimeters]

REV	DESCRIPTION	Date	APPROVED	THERMOELECTRIC COOLING AMERICA CORP.			
				FHP-400 / 500 FIELD MOUNTING			
				UNLESS OTHERWISE SPECIFIED DIMENSIONS ARE IN INCHES TOLERANCES ARE:			
				DECIMALS	ANGLE	+/-	
				.XX +/-		FRACTION	+/-
				.XXX +/-			+/-
				MATERIAL:			
				FINISH:			
				INFORMATION DISCLOSED HEREIN IS THE CONFIDENTIAL PROPERTY OF TECA CORP. RECIPIENT SHALL NOT USE THE INFORMATION IN ANY UNAUTHORIZED MANNER.			
				DRAWN BY: AA			
				DATE: 08/09/2011			
				DRAWING # SK110826			
				SCALE D8172			
				MASTER SK110824			
				REV LEVEL			
				SHEET			

Power Temperature Controllers

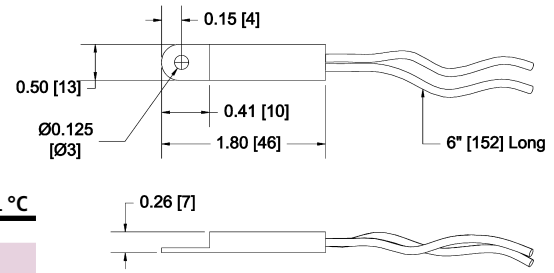
TC-1F POWER TEMPERATURE SWITCHES

Models TC-1F power temperature controller, with small tolerance and reset differential, are the simplest and most cost effective way to control a cooling or heating device (VAC or VDC) without a need for a relay. For circuits that have higher current draw simply use them in conjunction with a solid state relay.

Part Numbers:

Mode	Part Number	Note
Cool	TC-1C-XX	switch closes on temperature rise
Heat	TC-1H-XX	switch closes on temperature drop
XX: Specify temperatures 20 °C, 25 °C, 30 °C, 35 °C for cool mode and 10°C, 15 °C for heat mode		
Example: TC-1C-20 and TC-1H-10		

VOLTAGE	CURRENT AMPS	SET POINT TOLERANCE °C	RESET DIFFERENTIAL °C
125 VAC	2	+/- 3	3 - 6
250 VAC	1.3	+/- 3	3 - 6
12 VDC	2	+/- 3	3 - 6
24 VDC	1.3	+/- 3	3 - 6



Dimensions: Inches [Millimeters]

TC-4F COOL ONLY WITH ECO-MODE

Model TC-4F is similar to TC-1F plus it has a 2nd power switch for heat exchanger mode (ECO-Mode). The active cool set point for TC-4F is 35 °C and for heat exchanger mode (ECO-Mode) is 25 °C.

MODEL NUMBER	PART NUMBER	NOTES	HX TEMP. °C	COOL TEMP. °C	RESET (MAX) °C	RESET (TYP) °C	OPERATING VOLTAGE	SWITCHING VOLTAGE	ACTIVE MODE SWITCHING CURRENT MAX.	ECO-MODE SWITCHING CURRENT
TC-4F-DC	4F-24C-00-000	12/24/48 VDC	25 +/- 3	35 +/- 3	6.5	3	12/24/24 VDC	0-100 VDC	12 ADC	1.3 ADC
TC-4F-DC	4F-24D-00-000	12/24/48 VDC	25 +/- 3	35 +/- 3	6.5	3	12/24/48 VDC	0-100 VDC	20 ADC	1.3 ADC
TC-4F-DC	4F-24E-00-000	12/24/48 VDC	25 +/- 3	35 +/- 3	6.5	3	12/24/48 VDC	0-100 VDC	40 ADC	1.3 ADC

TC-6F COOL ONLY

Model TC-6F (Cool Only) thermostat is designed using two temperature power switches in conjunction with a solid state relay. A three position switch is provided to adjust temperature settings.

MODEL NUMBER	PART NUMBER	NOTES	TEMP @ T1 °C	TEMP @ T2 °C	T1-T2 (MAX) °C	RESET (TYP) °C	RESET °C	TEMP @ T3	OPERATING VOLTAGE	SWITCHING VOLTAGE	SWITCHING CURRENT MAX.
TC-6F	6F-00A-00-000	No Relay	35 +/- 5	25 +/- 5	10 +/- 3	6.5	3	Continuous On	NA	NA	NA
TC-6F-AC	6F-03T-00-000	VAC Version	35 +/- 5	25 +/- 5	10 +/- 3	6.5	3	Continuous On	85-250 VAC	24-280 VAC	10
TC-6F-DC	6F-43D-00-000	12/24 VDC	35 +/- 5	25 +/- 5	10 +/- 3	6.5	3	Continuous On	12/24 VDC	0-100 VDC	20 ADC
TC-6F-DC	6F-33D-00-000	48 VDC	35 +/- 5	25 +/- 5	10 +/- 3	6.5	3	Continuous On	48 VDC	0-100 VDC	20 ADC

TC-3F HEAT AND COOL

Model TC-3F (Heat/Cool) thermostat incorporates the same technology as the TC-6F. It contains a single setting each for both heating and cooling as referenced below:

MODEL NUMBER	PART NUMBER	NOTES	COOL TEMP. °C	HEAT TEMP. °C	RESET (MAX) °C	RESET (TYP) °C	OPERATING VOLTAGE	SWITCHING VOLTAGE	SWITCHING CURRENT MAX.	H-BRIDGE RELAYS
TC-3F-AC	3F-04R-00-000	VAC Version	35 +/- 5	15 +/- 5	6.5	3	85-280 VAC	24-280 VAC	10 AMPS	N/A
TC-3F-DC	3F-44G-00-000	12/24 VDC	35 +/- 5	15 +/- 5	6.5	3	3.5-32 VDC	0-100 VDC	20 ADC	N/A
TC-3F-DC	3F-44P-00-000	12/24 VDC	35 +/- 5	15 +/- 5	6.5	3	3.5-32 VDC	0-100 VDC	20 ADC	Solid State

TC-7F HEAT/COOL WITH ECO-MODE

Model TC-7F (Heat/Cool) thermostat incorporates the same technology as the TC-3F. It contains a single setting each for both heating and cooling and a heat exchanger mode (ECO-Mode).

MODEL NUMBER	PART NUMBER	NOTES	COOL TEMP. °C	HX TEMP. °C	HEAT TEMP. °C	RESET (MAX) °C	RESET (TYP) °C	OPERATING VOLTAGE	SWITCHING VOLTAGE	SWITCHING CURRENT MAX.	H-BRIDGE RELAYS
TC-7F-DC	7F-24G-00-000	24 VDC	35 +/- 3	25 +/- 3	10 +/- 3	6.5	3	24 VDC	24 VDC	20 ADC	N/A
TC-7F-DC	7F-24O-00-001	24 VDC	35 +/- 3	25 +/- 3	10 +/- 3	6.5	3	24 VDC	24 VDC	12 ADC	Solid State
TC-7F-DC	7F-24S-00-000	12 VDC	35 +/- 3	25 +/- 3	10 +/- 3	6.5	3	12 VDC	12 VDC	20 ADC	Solid State/Mechanical
TC-7F-DC	7F-24T-00-000	24 VDC	35 +/- 3	25 +/- 3	10 +/- 3	6.5	3	24 VDC	24 VDC	20 ADC	Solid State/Mechanical
TC-7F-DC	7F-24U-00-000	48 VDC	35 +/- 3	25 +/- 3	10 +/- 3	6.5	3	48 VDC	48 VDC	20 ADC	Solid State/Mechanical

For custom variations of any of the controls, contact TECA.

LIMITED WARRANTY

In the event a defect in material or workmanship is discovered in any of TECA's products within one year after the date they are delivered to Buyer, and if: (a) TECA is notified of the defect in writing by certified mail within 14 days of the date of discovery; (b) TECA may then either, at its sole discretion, inspect the product at Buyer's location, or require that the product be made available at Buyer's expense at TECA's premises for TECA's inspection within 14 days of the date of notification; and (c) the products are defective and the defects result from faulty materials and/or workmanship and not in any way from accident, misuse, misapplication, mishandling, modification, or alteration by the Buyer or the shipper, then TECA shall, at its sole option, repair or exchange defective products free of charge to Buyer, or credit to buyer the price of the defective products. ALL OTHER WARRANTIES, EXPRESS OR IMPLIED, ARE EXCLUDED, INCLUDING BUT NOT LIMITED TO THE IMPLIED WARRANTIES OF MERCHANTABILITY AND FITNESS FOR A PARTICULAR PURPOSE. IN NO EVENT SHALL TECA BE LIABLE FOR ANY CLAIM BASED UPON BREACH OF EXPRESS OR IMPLIED WARRANTY OR ANY OTHER DAMAGES WHETHER SPECIAL, INDIRECT, INCIDENTAL, CONSEQUENTIAL, LOST PROFITS, BUSINESS INTERRUPTION, OR LOSS OF BUSINESS OR CUSTOMER RELATIONSHIPS.

RETURNED GOODS, RESTOCKING CHARGES

In order to return merchandise for any reason (repair, replacement, or credit) a return authorization number must be issued by TECA. New merchandise may not be returned for credit beyond 60 days from shipment. Charges for incidental or other damages may also be made. All returned goods must be sent freight prepaid. A restocking charge of 15% will apply. On special equipment and custom modified equipment orders, additional incremental cancellation charges may be made.